

HAWAII

SIGGY AND HEATHER | TRIP TO CANADA / HAWAII | 15TH OCTOBER 2016


Traffic, Traffic

We are amazed at the traffic here. There is masses of it and it flows very slowly. We add to the problem, we know. They will have to do something - ban the car for all but residents and put in some sort of efficient transport system, maybe! One cannot ride or walk - there are no safe options. It is all very suffocating.

Today we headed off early to the big Saturday market at Diamond Head - just to the south of Honolulu CBD. It turned out to be mainly take-away food stalls. There were masses of people, but because we arrived early and were able to get a park. We ambled around for a while and purchased red guava bread and lots of fruit which we stored in our little cooler in the car. We then set off to walk the crater of the now extinct Diamond Head volcano.

By this time it was about 9am and the day was starting to warm up. The trek up to the summit is about 2 km. This trail was built in 1908 as part of the US Army Coastal Artillery Defence system. It was a hot climb and we were accompanied by stacks of other people. We found it far more tiring than the much longer treks in the snow and stopped numerous times to catch our breath.



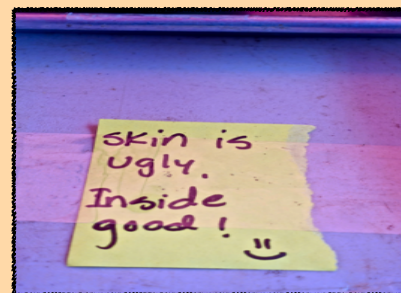
 continued on next page



IMPERIAL MEASUREMENTS
Interesting to see America staying with miles (distance) and pounds (weight) and not gone decimal like rest of the world. Love the name of the highways here too - Likelike. Not!



OUCH? Petrol very very expensive and weird when expressed in imperial measurement (ie: 9/10ths!!)



INTERESTING SIGN Avocados did not look very inviting but the sign made you think twice. We ended up buying some because of it.

Island touring

The view from the top of the volcano rim was quite spectacular. The masses of people and the hot conditions made it difficult to fully appreciate the views.

When we came back down we decided to make a loop back to our east coast flat, via the west coast. It was a pleasant enough coastal drive (once we got off the main freeway that took us past Honolulu). Further around the island we saw dolphins jumping out of the water but again lots more traffic!!

Unfortunately the road did not continue on around the coast, so we had to retrace our steps and go back to our place via Honolulu and part of

the central area. Travel here is really frustrating! It took us 2hrs to return home!!

This trip did give us a chance to cut through the centre of the island and see some of the central jungle area - quite spectacular. It looks like a carpet of green umbrellas are covering the perpendicular mountains. The road appeared to be one huge concrete flyover bridge running beside and over the slopes. On the way home, we stopped into Kualoa Ranch where the world drone racing competition is to be held and we heard some people flying in a park down by the beach. We

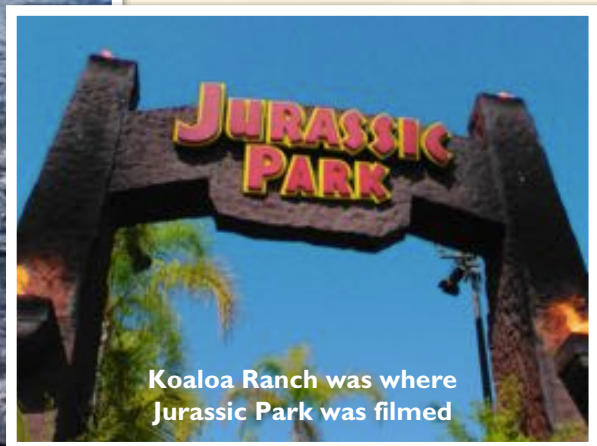
popped over to say hello. It was the Chile and Columbian teams. They were very happy to say hello and made a huge fuss of "Chad's dad". It was really very lovely to meet them and know our son is admired all over the world. We apparently just missed some of the Australian contestants.

Back to our humble abode by 3pm we had a late lunch and a lie down on a comfy bed with noisy aircon blasting.

We pick up Chad tomorrow. He is here as part of the Rotor Riot group. He is not competing - not sure of the others. Will know more tomorrow.



Rugged northern coastline



Koaloo Ranch was where Jurassic Park was filmed



PHOTOS



View of Honolulu with Waikikee Beach in foreground



Its amazing what a reaction a Rotor Riot shirt can have



It is ridiculous that "cars" like this are allowed on Hawaiian roads.